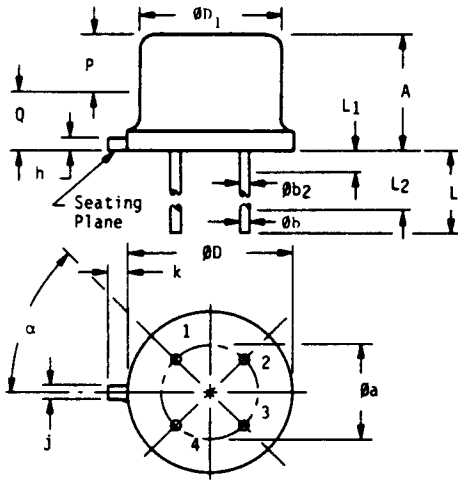


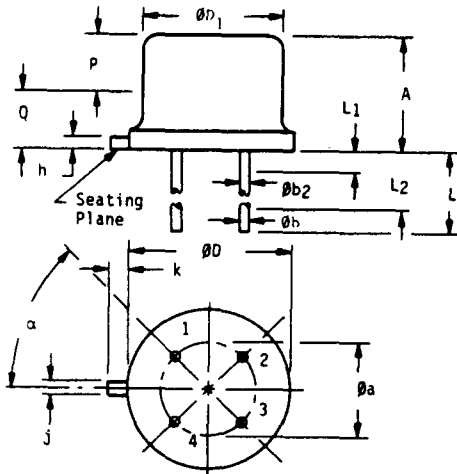
NOTES :



1. REFER TO APPLICABLE SYMBOL LIST.
2. DIMENSIONING AND TOLERANCING PER ANSI Y14.5, 1973.
3. LEAD NUMBER 4 OMITTED FROM THIS OUTLINE.
4. DIMENSION k MEASURED FROM ØD MAXIMUM.
5. ØD₁ SHALL NOT VARY MORE THAN .254 IN ZONE P. THIS ZONE CONTROLLED FOR AUTOMATIC HANDLING.
6. DETAILS OF OUTLINE IN THIS ZONE OPTIONAL.
7. LEADS AT GAUGE PLANE 1.372-1.397 BELOW SEATING PLANE SHALL BE WITHIN .178 RADIUS OF POSITIONAL TOLERANCE AT MMC RELATIVE TO TAB AT MMC. DEVICE MAY BE MEASURED BY DIRECT METHODS OR BY GAUGE AND GAUGING PROCEDURE DESCRIBED ON GAUGE DRAWING GS-1.
8. Øb₂ APPLIES BETWEEN L₁ AND L₂. Øb APPLIES BETWEEN L₂ AND L MINIMUM. DIAMETER IS UNCONTROLLED IN L₁ AND BEYOND L MINIMUM.
9. CONTROLLING DIMENSIONS: INCH.

SYMBOL	VARIATIONS (ALL DIMENSIONS SHOWN IN MILLIMETERS)												
	AA		NOTE	AB		NOTE	AC		NOTE	AD		NOTE	
	MIN.	MAX.		MIN.	MAX.		MIN.	MAX.		MIN.	MAX.		
A	6.10	6.60		6.10	6.60		6.10	6.60		6.10	6.60		
Aa	5.08	BSC	7.	5.08	BSC	7	5.08	BSC	7	5.08	BSC	7	
Øb	.41	.53	8	.41	.53	8	.41	.53	8	.41	.53	8	
Øb ₂	.41	.48	8	.41	.48	8	.41	.48	8	.41	.48	8	
ØD	8.51	9.39		8.51	9.39		8.51	9.39		8.51	9.39		
ØD ₁	7.75	8.50		7.75	8.50		7.75	8.50		7.75	8.50		
h	.23	1.04		.23	1.04		.23	1.04		.23	1.04		
j	.72	.86		.72	.86		.72	.86		.72	.86		
k	.74	1.14	4	.74	1.14	4	.74	1.14	4	.74	1.14	4	
L	38.10	44.45	8	12.70	19.05	8	38.10	44.45	8	12.70	19.05	8	
L ₁	-	1.27	8	-	1.27	8	-	1.27	8	-	1.27	8	
L ₂	6.35	-	8	6.35	-	8	6.35	-	8	6.35	-	8	
P	2.54	-	5	2.54	-	5	2.54	-	5	2.54	-	5	
Q	-	1.27	6	-	1.27	6	-	1.27	6	-	1.27	6	
α	45°	BSC	7	45°	BSC	7	45°	BSC	7	45°	BSC	7	
NOTE	1,2,3,9			1,2,9			1,2,9			1,2,3,9			
REF.	11.2 Item 109			11.2 Item 109			11.2 Item 109			11.2 Item 109			
ISSUE	E NOV. 82			E NOV. 82			E NOV. 82			E NOV. 82			
JEDEC SOLID STATE PRODUCT OUTLINES			TITLE HEADER FAMILY 5.080 PIN CIRCLE				ISSUE E		DATE NOV. 82		TO-205 VARIATION AA THRU AD		

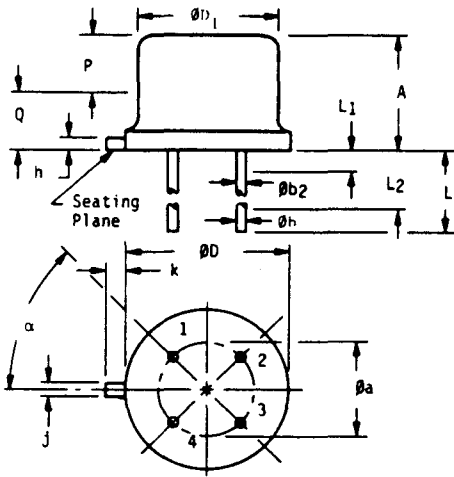
NOTES :



1. REFER TO APPLICABLE SYMBOL LIST.
2. DIMENSIONING AND TOLERANCING PER ANSI Y14.5, 1973.
3. LEAD NUMBER 4 OMITTED FROM THIS OUTLINE.
4. DIMENSION k MEASURED FROM θD MAXIMUM.
5. θD , SHALL NOT VARY MORE THAN .010 IN ZONE P. THIS ZONE CONTROLLED FOR AUTOMATIC HANDLING.
6. DETAILS OF OUTLINE IN THIS ZONE OPTIONAL.
7. LEADS AT GAUGE PLANE .054-.055 BELOW SEATING PLANE SHALL BE WITHIN .007 RADIUS OF POSITIONAL TOLERANCE AT MMC RELATIVE TO TAB AT MMC. DEVICE MAY BE MEASURED BY DIRECT METHODS OR BY GAUGE AND GAUGING PROCEDURE DESCRIBED ON GAUGE DRAWING GS-1.
8. θb , APPLIES BETWEEN L_1 AND L_2 . θb APPLIES BETWEEN L_2 AND L MINIMUM. DIAMETER IS UNCONTROLLED IN L_1 AND BEYOND L MINIMUM.
9. CONTROLLING DIMENSIONS: INCH.

VARIATIONS (ALL DIMENSIONS SHOWN IN INCHES)

SYMBOL	AA		NOTE	AB		NOTE	AC		NOTE	AD		NOTE
	MIN.	MAX.		MIN.	MAX.		MIN.	MAX.		MIN.	MAX.	
A	.240	.260		.240	.260		.240	.260		.240	.260	
θa	.200	BSC	7	.200	BSC	7	.200	BSC	7	.200	BSC	7
θb	.016	.021	8	.016	.021	8	.016	.021	8	.016	.021	8
θb_2	.016	.019	8	.016	.019	8	.016	.019	8	.016	.019	8
θD	.335	.370		.335	.370		.335	.370		.335	.370	
θD_1	.305	.335		.305	.335		.305	.335		.305	.335	
h	.009	.041		.009	.041		.009	.041		.009	.041	
j	.028	.034		.028	.034		.028	.034		.028	.034	
k	.029	.045	4	.029	.045	4	.029	.045	4	.029	.045	4
L	1.500	1.750	8	.500	.750	8	1.500	1.750	8	.500	.750	8
L_1	-	.050	8	-	.050	8	-	.050	8	-	.050	8
L_2	.250	-	8	.250	-	8	.250	-	8	.250	-	8
P	.100	-	5	.100	-	5	.100	-	5	.100	-	5
Q	-	.050	6	-	.050	6	-	.050	6	-	.050	6
α	45°	BSC	7	45°	BSC	7	45°	BSC	7	45°	BSC	7
NOTE	1,2,3,9			1,2,9			1,2,9			1,2,3,9		
REF.	11.2 Item 109			11.2 Item 109			11.2 Item 109			11.2 Item 109		
ISSUE	E NOV. 82			E NOV. 82			E NOV. 82			E NOV. 82		
JEDEC SOLID STATE PRODUCT OUTLINES			TITLE HEADER FAMILY .200 PIN CIRCLE				ISSUE E		DATE NOV. 82		TO-205 VARIATION AA THRU AD	



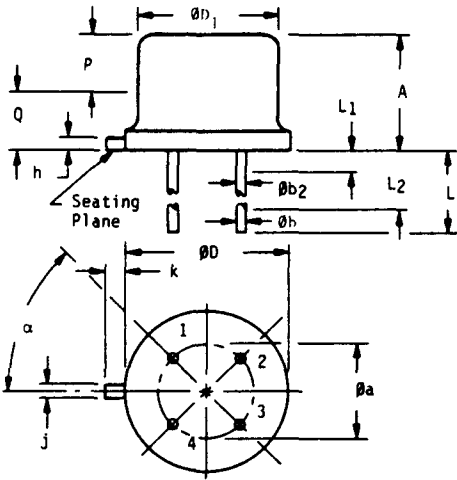
NOTES :

1. REFER TO APPLICABLE SYMBOL LIST.
2. DIMENSIONING AND TOLERANCING PER ANSI Y14.5, 1973.
3. LEAD NUMBER 4 OMITTED FROM THIS OUTLINE.
4. DIMENSION k MEASURED FROM ϕD MAXIMUM.
5. ϕD SHALL NOT VARY MORE THAN .254 IN ZONE P. THIS ZONE CONTROLLED FOR AUTOMATIC HANDLING.
6. DETAILS OF OUTLINE IN THIS ZONE OPTIONAL.
7. LEADS AT GAUGE PLANE 1.372-1.397 BELOW SEATING PLANE SHALL BE WITHIN .178 RADIUS OF POSITIONAL TOLERANCE AT MMC RELATIVE TO TAB AT MMC. DEVICE MAY BE MEASURED BY DIRECT METHODS OR BY GAUGE AND GAUGING PROCEDURE DESCRIBED ON GAUGE DRAWING GS-1.
8. ϕb APPLIES BETWEEN L_1 AND L_2 . ϕb APPLIES BETWEEN L_2 AND L MINIMUM. DIAMETER IS UNCONTROLLED IN L_1 AND BEYOND L MINIMUM.
9. CONTROLLING DIMENSIONS: INCH.

VARIATIONS (ALL DIMENSIONS SHOWN IN MILLIMETERS)

SYMBOL	AE		NOTE	AF		NOTE	AG		NOTE	MIN.	MAX.	NOTE	
	MIN.	MAX.		MIN.	MAX.		MIN.	MAX.					
A	6.15	6.60		4.07	4.57		4.07	4.57					
ϕa	5.08	BSC	7	5.08	BSC	7	5.08	BSC	7				
ϕb	.41	.53	8	.41	.53	8	.41	.53	8				
ϕb_2	.41	.48	8	.41	.48	8	.41	.48	8				
ϕD	9.10	9.39		8.64	9.39		8.64	9.39					
ϕD_1	8.18	8.50		8.01	9.01		8.01	9.01					
h	.23	1.04		.23	1.04		.23	1.04					
j	.72	.86		.72	.86		.72	.86					
k	.74	1.14	4	.74	1.14	4	.74	1.14	4				
L	38.10	41.30	8	12.70	19.05	8	12.70	14.27	8				
L_1	-	.50	8	-	1.27	8	-	1.27	8				
L_2	6.35	-	8	6.35	-	8	6.35	-	8				
P	3.81	-	5	1.78	-	5	1.78	-	5				
Q	-	1.27	6	-	1.27	6	-	1.27	6				
α	45°	BSC	7	45°	BSC	7	45°	BSC	7				
NOTE	1, 2, 3, 9			1, 2, 3, 9			1, 2, 3, 9						
REF.	11.2 Item 109			11.2 Item 109			11.2 Item 109						
ISSUE	E NOV. 82			E NOV. 82			E NOV. 82						
JEDEC SOLID STATE PRODUCT OUTLINES			TITLE HEADER FAMILY 5.080 PIN CIRCLE				ISSUE E		DATE NOV. 82		TO-205 VARIATION AE THRU AG		

NOTES :



1. REFER TO APPLICABLE SYMBOL LIST.
2. DIMENSIONING AND TOLERANCING PER ANSI Y14.5, 1973.
3. LEAD NUMBER 4 OMITTED FROM THIS OUTLINE.
4. DIMENSION k MEASURED FROM ϕD MAXIMUM.
5. ϕD_1 SHALL NOT VARY MORE THAN .010 IN ZONE P. THIS ZONE CONTROLLED FOR AUTOMATIC HANDLING.
6. DETAILS OF OUTLINE IN THIS ZONE OPTIONAL.
7. LEADS AT GAUGE PLANE .054-.055 BELOW SEATING PLANE SHALL BE WITHIN .007 RADIUS OF POSITIONAL TOLERANCE AT MMC RELATIVE TO TAB AT MMC. DEVICE MAY BE MEASURED BY DIRECT METHODS OR BY GAUGE AND GAUGING PROCEDURE DESCRIBED ON GAUGE DRAWING GS-1.
8. ϕb_2 APPLIES BETWEEN L_1 and L_2 . ϕb APPLIES BETWEEN L_2 AND L MINIMUM. DIAMETER IS UNCONTROLLED IN L_1 AND BEYOND L MINIMUM.
9. CONTROLLING DIMENSIONS: INCH.

VARIATIONS (ALL DIMENSIONS SHOWN IN INCHES)

SYMBOL	AE		NOTE	AF		NOTE	AG		NOTE	MIN.	MAX.	NOTE	
	MIN.	MAX.		MIN.	MAX.		MIN.	MAX.					
	A	.242		.260			.160	.180					
ϕa	.200	BSC	7	.200	BSC	7	.200	BSC	7				
ϕb	.016	.021	8	.016	.021	8	.016	.021	8				
ϕb_2	.016	.019	8	.016	.019	8	.016	.019	8				
ϕD	.358	.370		.340	.370		.340	.370					
ϕD_1	.322	.335		.315	.355		.315	.355					
h	.009	.041		.009	.041		.009	.041					
j	.028	.034		.028	.034		.028	.034					
k	.029	.045	4	.029	.045	4	.029	.045	4				
L	1.500	1.626	8	.500	.750	8	.500	.562	8				
L_1	-	.020	8	-	.050	8	-	.050	8				
L_2	.250	-	8	.250	-	8	.250	-	8				
P	.150	-	5	.070	-	5	.070	-	5				
Q	-	.050	6	-	.050	6	-	.050	6				
α	45°	BSC	7	45°	BSC	7	45°	BSC	7				
NOTE	1, 2, 3, 9			1, 2, 3, 9			1, 2, 3, 9						
REF.	11.2 Item 109			11.2 Item 109			11.2 Item 109						
ISSUE	E NOV. 82			E NOV. 82			E NOV. 82						
JEDEC SOLID STATE PRODUCT OUTLINES			TITLE HEADER FAMILY .200 PIN CIRCLE				ISSUE E		DATE NOV. 82		TO - 205 VARIATION AE THRU AG		